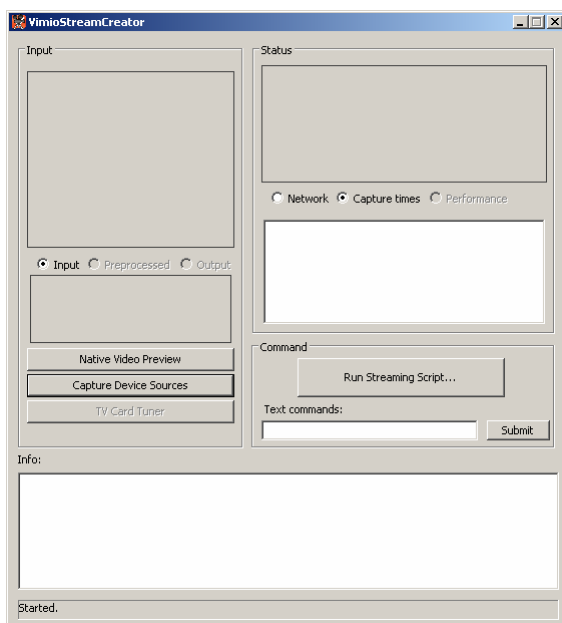


1. There are two example scripts located in the scripts folder of the VSC installation. One for a vim feed with three different qualities and one for a 3gp feed with three different qualities. Before using them, some parameters in them need to be changed. The parameters consists of a number of defines at the top of the script.

In the example vim script, atleast the base name of the feed – FEEDNAMEBASE must be changed to something unique for the mserver used. For the base name you choose, “-low”, “-med” and “-high” will be added to the name to distinguish the different quality feeds in the mserver admin interface. Also the mserver hostname and port – MSERVERHOST and MSERVERPORT has to be set to the designated mserver on your network.

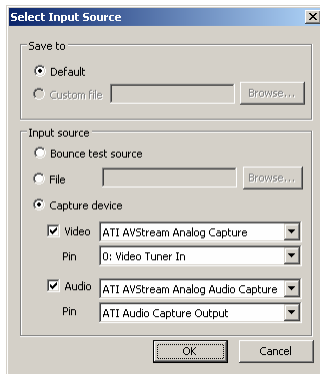
The example rtp script is quite similar, except it has six video/audio ports defines – VIDEOPORTLOW, AUDIOPORTLOW, VIDEOPORTMED, AUDIOPORTMED, VIDEOPORTHIGH, AUDIOPORTHIGH, which has to be set to something unique for the mserver used. As they are used for rtp traffic, for each port you specify, two ports will be used – the one specified and the one above (+1).

2. Start the VSC and press the “Capture Device Sources” button to access the input source selection dialog.



3. Select an input source, which can be the internally generated “bounce test”, a media file or media file playlist or a capture device. The accepted format for playlists is m3u, which is a regular text file containing a list of the media files to play with one file per row. When relative paths are used, they are relative to the filesystem location of the playlist.

This selection will be saved and does not need to be set manually for each run.



4. Press the “Run Streaming Script” button and select the script you just modified to start the feed.

To make the VSC automatically start a script, add it to the autostart script found in the same script folder as the examples.